

# PUBLIC AUCTION

Commerical Real Estate  
& Business Inventory

LUNCH WILL  
BE AVAILABLE

2 Commercial Buildings in downtown Loomis, Nebraska  
**SATURDAY, APRIL 9TH, 2016 - 9:30 AM**  
303 Commerical Ave, Loomis, Nebraska

Real Estate-Commercial Property  
2 Commercial Buildings in downtown Loomis, Nebraska!  
Property & Hoist will sell at 1:00 pm

303 Commercial Avenue, Loomis  
Open for Viewing- March 24th 5:30-7:30 p.m.  
or by appointment 308-325-4952.

#### Legal Descriptions:

**Building 1:** Loomis Original Town Lot 11 except SW 24 x 18 ½; Middle 25 x25 of Lot 12 Blk 4.

**Building 2:** Loomis Original town Lot 10 B. 4, Loomis, Phelps County, Nebraska

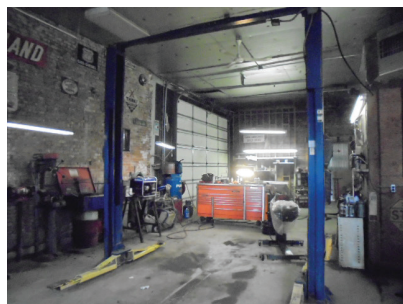
Excellent shop space with main street frontage. Business or Investment opportunity! Currently used as a repair shop but possibilities for this space are numerous. Strong ag community. This building has several overhead doors in the back with entries from the south and west sides of the building. Street and alley access.

**Building 1:** 2495 sq. ft main floor & 552 sq ft basement single story brick exterior building. Concrete and wood floor. Recycled oil heating unit. 2 overhead doors & 2 walk in doors.

**Building 2:** 1705 sq. ft. single story steel building with 2 overhead doors (1- 9'x12' & 1- 12'x 14') and 2 walk in doors with concrete floor and it is insulated.

#### TERMS:

20% down the day of sale with balance due by April 28th, 2016. Not contingent on financing or inspections. "As is". Title insurance and escrow closing to be divided equally. Brell Realty & Auction acting as seller's agent



#### SHOP EQUIPMENT & TOOLS

Air Powered Grease Dispenser • 9K Rotary Hydraulic Lift • Clean Burn CB1400 Heater with 200 gal. Tank • Shelving and • Metal Cabinets • Heavy Duty Work Bench-Homemade for motorcycle repairs- can be raised and lowered pneumatically (nice) • Puma 220 Volt Air Compressor • Heavy Duty Engine Stand • Parts Washer • Ammco 3000 Drum & Rotor Turner (re-built 4 yrs) • M&W Dyno • L Teck 250 MIG Welder • Extension cords • 10-Ton Porta Power • Various Sledges, Tire Bars, Shovels, Brooms • Sioux Valve Seat Grinder with Stones • Sioux Valve Grinder on Stand • Various Drain Pans (Assorted Sizes) • Solar 450 Battery Charger • Coats Tire Balancer with weights • Coats 50 654 Tire Machine • Chicago 1" Air Gun & • Sockets for Truck Tires • Tire Cages • Alt./Starter Testing Machine • 2 Sets of Jack Stands • 2 Ton Cherry Picker (new 2012) • 3 Air Hoses with 2-50' Reels • American Pressure Washer 220 Volt (Hot or Cold) • Heavy Duty Vise on Heavy Duty Stand • Flow Meter • Floor Jacks/Hydraulic Jack • Engine Hoist (Heavy Duty) • Drill Press with Assorted Bits • 2 Transmission Jacks • Oxygen/Acetylene Torch on Two Wheel Cart with Tips • 22 Ton Air Jack on Wheels • Craftsman 9 gal. Wet/Dry Shop Vac • 10 Ton Press • DeWalt Cutoff Saw on Stand • Coats 50 654 Tire Machine (with assorted Tools & Weights) • Valve Grinding • Machine on Stand (Sioux) • Snap-On Modis Computer Upgrade to 2013 • Snap-on R-12, R-134 Reclaim Recycler • Tire Spreader • Topside Overhead Creeper • 1 inch air hose • Assortment of Chain • Several welder cords • Power Unit Cooling stand (homemade) • A/C Lear Detector Dye • Air Operated Sprayer-Heavy Duty • L-tech welder • Vices • Alignment toe board • TPMS Diagnostic Service Tool • Work Bench w/Vice • Magna Flux Machine • 2 torch sets w/bottles w/title • 1 set of oxygen, acetylene bottles w/title • 50' oxy-acetylene hose reel • Port A Cool

#### FLUIDS & PARTS - 100+ BOXES OF MANY ITEMS

New oil-various weights • Raybestos Shoes, Pads, Brake Hardware • Wix Air, Oil Fuel Filters • Assorted ANCO Wiper Blades • Krylon Spray Paint • Assorted Felpro Gaskets • Assorted Felpro Gaskets/Sets • Gaskets, 200- AC Spark Plugs • Champion Spark Plugs • Borgwarmer /Standard • Alternators/Starters/Water Pumps • Assorted Wagner Bulbs • Assorted Fuses • Dayco Assorted Belts • Dayco Hoses • Pico Various Electrical Supplies on Display Stand • ATP Transmission Filters • SKF and CR Seals • Wagner Headlamps • STD Carburetor Kits • Pro Series Wire Sets • Washer Fluid • Antifreeze • Quarts of Power • Steering Fluid • Brake Fluid • 12oz Mag 1 Fuel Injector Cleaner • R134A Retro Kit for A/C • Power Service Diesel Treatment 32oz. • ½ Gallon Howes • Airbrake Antifreeze 32oz. • Heet 12oz. • PB Blaster Lubricant • 32oz. Rislone • Mag 175W-90 Gear Lube, 3 5 Gallon 80/90 Gear Lube • Stop Leak for Radiators • 134S Red Dye Tel-Refrigerant • K Seal 8 oz. • Internal Lube for A/C 4oz. • Trans X-Posi Trac for Transmissions • Boxes of Dayco Hoses- Heater, Fuel, Multifunction 1/4", 5/16", 3/8", ¾" with cutting Tool • Brass Tubing -Various Sizes with Cutting Tool • Various Nuts, Bolts, Screws, (Regular & Lock Washers, Metric, Standard, Fine & Corse Thread) • Grease Fittings Zerk (Metric & Standard) • Assortment Boxes of Roll Pins, Cotter Pins, Clevis Pins, O-Rings, Fiber/Nylon Washers, Grommets, Vacuum Line Connectors, Allen Cap Screws, Springs, Central Bronze Bearings, Socket Set Screws, Wing Nuts, Tiller Tines, Washers/Lock Washers, Snap Tings, Set Screws, Rolled Tension Spring Pins, Woodruff Keys, Muffler Clamps, U-Joints, A/C O-Rings. • Boxes of Four Seasons Relays, A/C Parts • Assorted Chains with Connecting Links • Boxes of Kats Engine Block Heaters • Boxes Dayco Idler Tensioner Pulleys • Tie Straps and Straight Hose • Dayco Belts, 6' Light Bulbs, Extra Shelving & Dayco Bent/Curved Hoses • Milton, Lisle & Help Tools/Parts • Displays for Battery Terminals & A/C O-Rings • Murphy Switches

#### MISCELLANEOUS

• Parts Books with Lighted Display Stands (Chilton Service Manuals) • 3 Carts-Heavy duty used to move engines around • Toolboxes • Toro 421 Snowblower • Shelving and Metal Cabinets • 2 Roller Conveyors • I Beams- 2 – 14'6" used for forklift attachment • Bulk Oil Containers • Dually Tire Caddy • Upright Freezer • Bicycles • Iron/Aluminum

#### LARGE PARTS

2- Hydrogen Wild Cat 900 fuel boosters for power units, 1 Gallon Corrosive Fluid for Wild Cat 9000 • #3 Rockford Clutch • Irrigation PTO • Unassembled 454 parts- Large Blocks • Isuzu 6BD1TPX 150 HP Parts • Cylinder heads (used-Chevy, Chrysler, International) • 4 Cylinder Cat Parts • LT1 Chevy engine parts

#### ANTIQUES & COLLECTIBLES

Pinball machine • Galaga Arcade Machine - 4 games • Wooden 4 wheel cart • Stop light frame (no electrical) • Allis Tractor Umbrella • Ghetto sign in old IGA frame from building • Transmission Jack

#### VEHICLES, EQUIPMENT, POWER UNITS

1999 Dodge Ram Extended Cab 4x4, ¾ Ton, Cummins Diesel, Automatic flatbed w/built in storage 125,000 miles • 1980 GMC 1 Ton Flatbed truck with boom. 350, 4 speed engine rebuilt 5000 miles • Toyota Forklift- 2 speed- propane with extra tank • New 454 Chevrolet Power Unit w/radiator & clutch • 150 Horse Diesel Power Unit w/ radiator & clutch (used-guest consignor) • 454 Chevrolet Power Unit (rebuilt –guest consignor)

OWNERS: **KIRBY'S REPAIR INC.**

*Brell Realty*  
*Auction*

www.BrellRealty.com

LeahAnn M. Brell, Broker/Owner  
308-785-2093

Auctioneers:  
Larry Brell, William Brell, Randy Helms  
Head Clerk:  
LeahAnn Brell

Terms: Cash, Credit Card or good check day of sale. No items removed until settled for. Not responsible for accidents or theft. All announcements day of sale take precedence over all previous advertisements. All items must be removed the day of sale unless other arrangements are made.